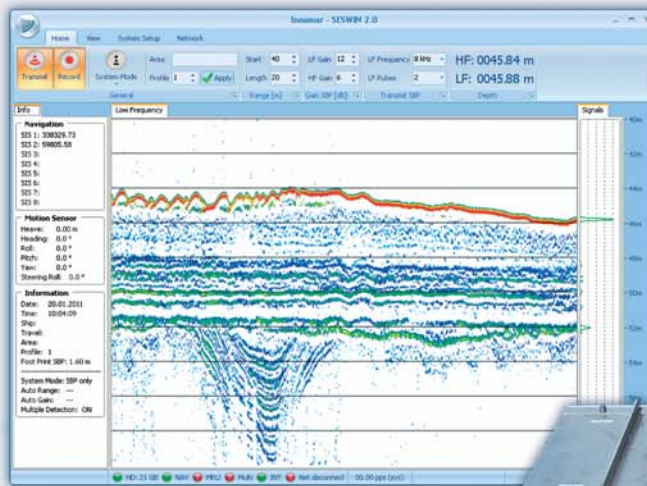
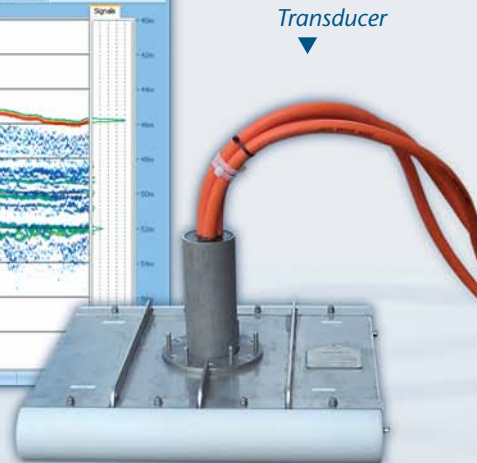




▲
Top-side unit



▲
Screenshot of the operating software



▼
Transducer

► **Performance**

- water depth range: 2 – 2,000 m
- penetration: up to 70m depending on sediments and frequency
- range resolution: up to 5 cm, depending on pulse settings
- HRP compensation: heave, roll (30°), pitch (25°, option), depending on sensor data
- beam width @ 3 dB: ±1° / footprint < 3.5 % of water depth for all frequencies

► **Transmitter**

- primary high frequencies: 94 – 110 kHz
- secondary low frequencies: 4, 5, 6, 8, 10, 12, 15 kHz
- primary pulse power: > 50 kW
- primary source level: > 246 dB/μPa re 1 m
- pulse width: 0.07 – 2 ms
- pulse rate: up to 30/s depending on range, multi-ping mode available
- pulse type: CW, Ricker, LFM (chirp)

► **Receiver**

- primary high frequency (echo sounder, bottom track)
- secondary low frequency (sub-bottom data, multi-frequency mode)
- water column imaging

SES-2000 medium Parametric Sub-bottom Profiler

► **System Components**

- transceiver unit 19 inch / 16 U
- (WHD: 0.52 m x 0.74 m x 0.50 m; 90 kg)
- transducer incl. 30 m cable
- (WHD: 0.60 m x 0.15 m x 0.55 m; 90 kg)
- system control: internal PC

► **Software**

- SESWIN data acquisition software
- SES Convert SEG-Y/XTF data export
- SES NetView remote display
- ISE post-processing software

► **Power Supply Requirements**

- 100 – 240V AC / 50 – 60 Hz
- power consumption: < 900 W



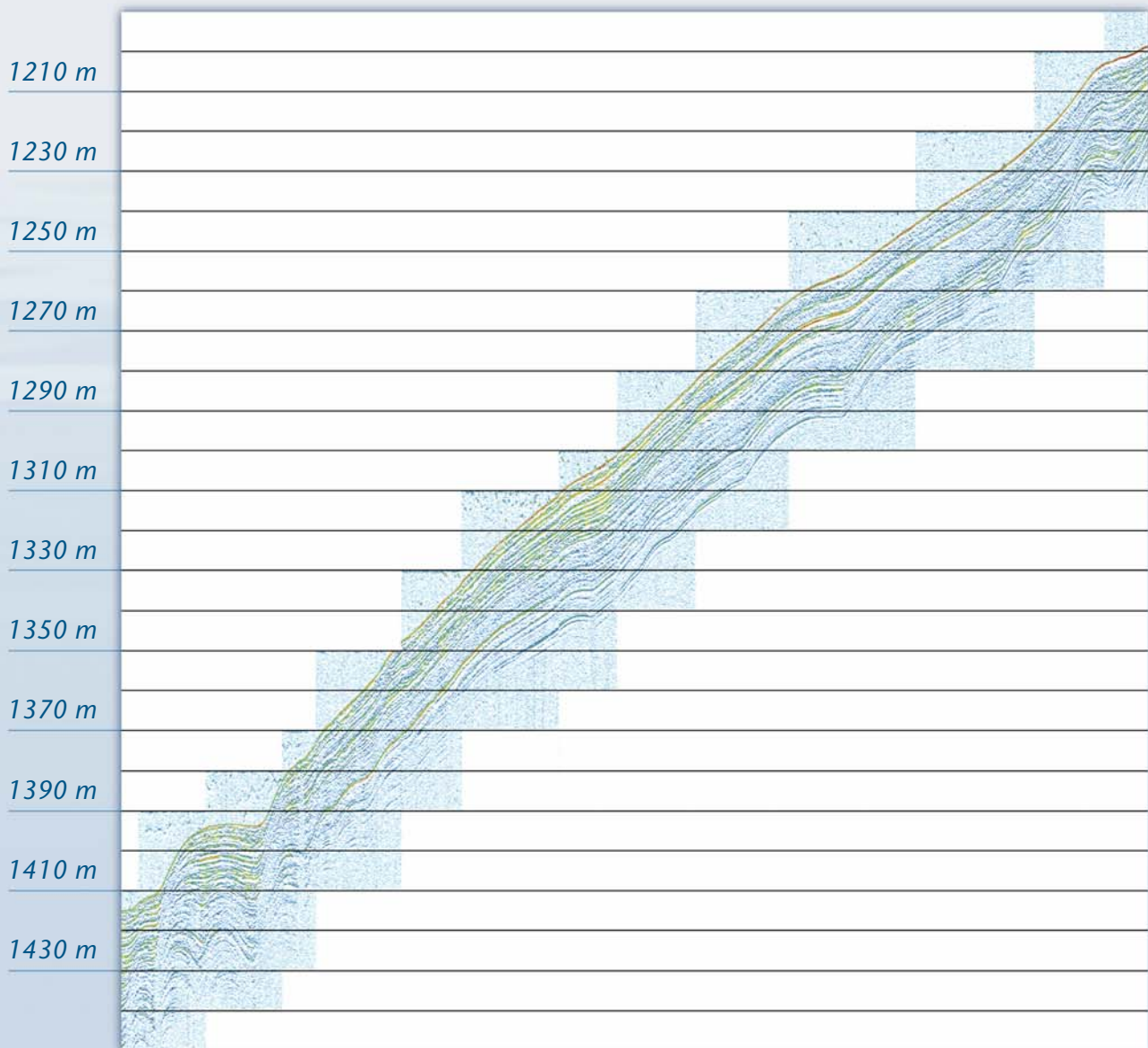
Innomar



www.innomar.com

Innomar Technologie GmbH, Germany

Survey example of SES-2000 medium



Pacific (Chile) echo plot example – Frequency 8kHz, pulse length 800 μ s, profile length 10800m

Innomar Technologie GmbH

Schutower Ringstraße 4
D-18069 Rostock
Phone (Fax) +49 381 44079-0 (-299)
E-Mail info@innomar.com



www.innomar.com