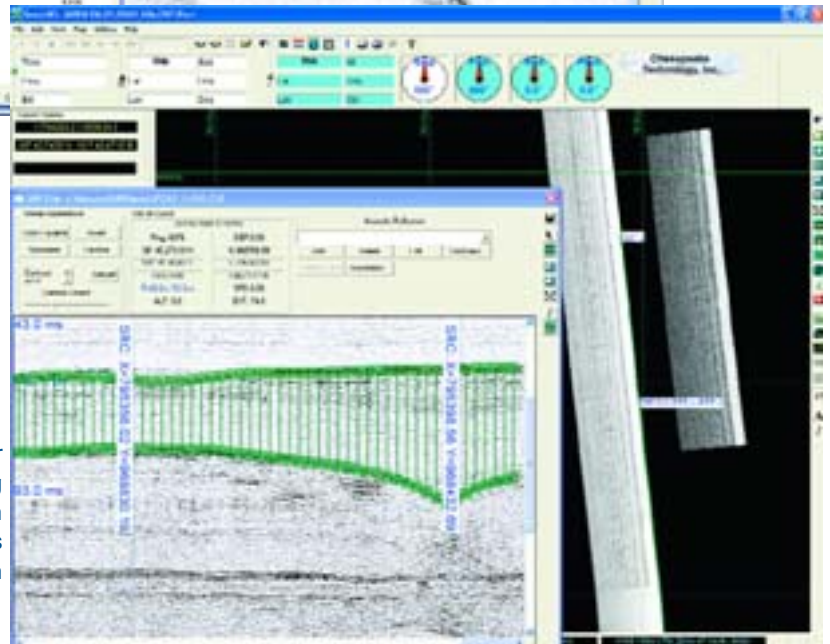
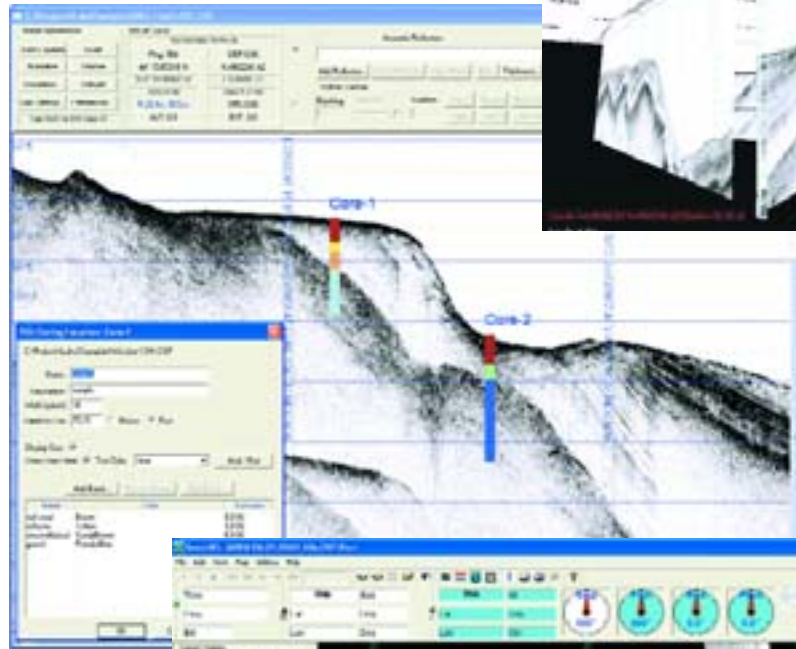


SonarWiz.MAP+SBP



3-D Video

Core Sample



Reflector
Digitizing
with
Thickness
Computation

SonarWiz.MAP+SBP:
the fastest, friendliest
acoustic mapping
package available now
includes a sub-bottom
profiler acquisition and
processing module.

SonarWiz.MAP+SBP produces real-time and post-processed mosaics and SBP profiles at any resolution and size, quickly and on-the-fly.

In real-time acquisition mode, it supports most sonar systems, in addition to navigation, fathometer and magnetometer input.

In post-processing mode, it will handle most of the common sidescan and sub-bottom data file types as well as S-57, VPF, BSB, GeoTiff and many more charting, GIS and CAD formats.

*Runs on Windows 2000,
XP, Vista and later*

SonarWiz.MAP+SBP Display Capabilities



Chesapeake

Technology Inc.

650.967.2045

www.chesapeaketech.com

SonarWiz.MAP+SBP:

Interactive visualization tools such as zoom, pan, measure and on-the-fly image scaling make SonarWiz.MAP+SBP an indispensable tool for sonar mosaic production and sub-bottom profile interpretation.

Contact identification and feature digitizing tools allow features to be located and classified on the mosaic during or after data acquisition. Graphic, tabular and application specific files (HTML, MS Word, ESRI Shapefiles) provide multiple data export routes. Export SBP profile sections with custom annotations and scale lines.



Chesapeake Technology, Inc.
1146 Kathy Way
Mountain View, CA 94040 USA
voice: 650.967.2045
fax: 650.961.6734
sales@chesapeaketech.com
www.chesapeaketech.com

Sub-Bottom Profiler Module Features...

- ➔ **Broad File Type Support**—XTF, SEG-Y, CODA (.COD and .CDA), Edgetech JSF, Trittech SBP V4Log and Syqwest StrataBox data file formats are currently supported with more formats on the way.
- ➔ **Intuitive Mapping**—The SBP Option maps your sub-bottom data in a 2D plan view by rotating the vertical trace 90 degree into the map surface providing a plan view of your data. Individual files may be moved, trimmed, split, image enhanced just by a simple right-click in the map view.
- ➔ **Classical Profile Views**—In addition to a plan view of all of your SBP data files, SonarWiz.MAP+SBP also provides multiple profile views of your SBP files that are "cursor-linked" with the map view. The profile views allow infinite scroll and pan over the entire SBP data file and complete customization of the vertical and horizontal scale lines and event marking.
- ➔ **Acoustic Reflector Generation**—SonarWiz.MAP+SBP profile view provides a simple interface for digitizing acoustic reflectors in the profile. Reflectors are displayed in the map view and on the profile view as they are digitized. SonarWiz.MAP+SBP includes a complete export tool that will save the digitized reflectors in CAD, GIS and ASCII formats.
- ➔ **Isopach and Thickness Tool**—SonarWiz.MAP+SBP thickness tool compares any pair of reflectors and automatically generates the thickness vector for the area of intersection of the reflectors. This is a huge time saving feature.
- ➔ **3D Viewer**—Included with all SonarWiz.MAP products is a 3D visualization package that displays mosaics, maps and SBP profiles in an interactive 3D display. Exports movie files and JPEG images.
- ➔ **Core Processing**—Show your interpretations right on the SBP profile using the new Core mapping tool.

SonarWiz.MAP Features...

- ➔ Real time data acquisition and display: supports most sonar systems, plus navigation, fathometer and magnetometer input.
- ➔ Real-time and post processed sonar mosaic production.
- ➔ Real-time survey-line generator, editor and steering indicator makes line following a breeze.
- ➔ Real-time QC-sonar waterfall display.
- ➔ Interactive and on-the-fly scaling.
- ➔ Sonar file importing: supports most sonar file formats.
- ➔ Comprehensive selection of pre-defined geodetic datums, coordinate systems and map projections, plus support for user defined datums and projections.
- ➔ Support for basemaps and overlays includes BSB, S-57, VPF/VMAP, ECW, DXF, Shapefiles, GeoTiff and much more.
- ➔ Bottom Tracker: manual and automatic modes.
- ➔ Comprehensive signal processing and gain control including Beam Angle Correction, Destriping, Non-linear per-channel TVG, AGC, layback.
- ➔ On-screen feature digitizing and attribution.
- ➔ Target capture and reporting.
- ➔ On-screen tools simplify difficult tasks such as adjusting survey lines.
- ➔ Printed output to any Windows supported printer or plotter.
- ➔ Output mosaics to GeoTiff (TIF/TFW) with user specified resolution.
- ➔ Output digitized features and reports to ESRI shapefiles, AutoCAD DXF, and simple ASCII files.
- ➔ Full online HTML help system, unmatched customer support and a yearly maintenance agreement available for extended upgrade and support options.