

Isis® SS-Logger™

Modular Sidescan Sonar Data Acquisition

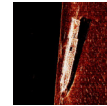
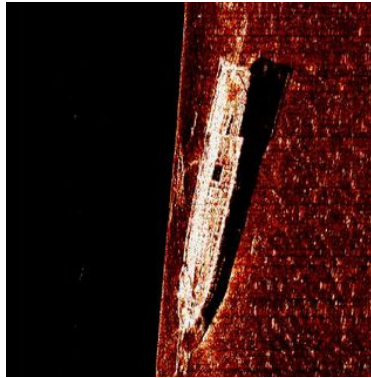
Isis® SS-Logger™ is our new modular sidescan sonar data logger. The easy-to-use, extensively field tested core components of Isis® Sonar™ form the basis of Isis® SS-Logger™, including servers to most sidescan sonars on the market today.

The software is fully flexible for upgrading as new survey requirements arise. Isis® SS-Logger™ integrates external sensors including GPS & gyros and correctly logs and geo-references sonar imagery into XTF files.

Isis® SS-Logger™ boasts the stability of Isis® Sonar™ - the tool of choice for hydrography, minehunting, environmental studies, oilfield engineering, civil engineering, oceanography and law enforcement.

The software is competitively priced, easy to set-up, intuitive to use, and has a full-featured upgrade path for all future Triton technology .

This product is built to work under Microsoft Windows XP and Vista, and has been tested with pre-release versions of Microsoft Windows 7.



Specifications

Acquisition

- Analog or digital sonars
- Four simultaneous channels
- Configurable serial I/F
- NMEA navigation
- Cable out / layback
- Automatic file naming
- XTF file output

Display

- Multiple waterfall windows
- TVG - auto / manual
- Selectable color
- Speed correction
- Voltage window
- Coverage map window
- Telemetry display
- Scale lines
- Event marks
- Bottom track
- Scroll forward / back
- File looping in playback
- Search file by time / ping
- Skip pings forward / back
- Play next file in time

Interfaces

- All analog sonars
- Edgetech MPX, 4200, DF-1000,
- 272TD, ACI, DCI, FSIU
- Klein 5000, 3000, 2000
- Benthos C3D, SIS-1000, 1500,
- 1600, 3000, Chirp II.
- C-Max CM2

Options

- Real time mosaicking
- Mosaicking during replay
- Target module (shown above)
- ASCII reports from XTF fields
- Printing to EPC, ISYS, Raytheon, etc.
- Pipeline tracking & free-span detection
- Digitizing points, lines, polygons

Quality Control

- Status indicator for data logging
- Alarms for low altitude / storage
- Auto file changing
- Beam angle correction
- Grazing angle correction
- File size display
- Available space display

Feature Matrix

INPUT AND LOG CAPABILITY

Feature	Isis® SS-Logger™
Sonar Data - Analog	Yes
Sonar Data - Digital	Yes
4 Channel SSS	Yes
Configurable Serial I/F	Yes
NMEA0183 Navigation	Yes
Towfish Depth	Yes
Water Depth	Yes
Sound Velocity	Yes
Real Time Tide (RTK)	Yes
Event Marks	Yes
Cable Out / Layback	Yes
Sub-bottom Profiler	No
Multibeam Sonars	No

DISPLAY CAPABILITY

Feature	Isis® SS-Logger™
Waterfall window	Yes
Voltage window	Yes
Coverage TritonMap™	Yes
Navigation display	Yes
Multiple Waterfalls	Yes
Speed-Corrected	Yes

telemetry display	Yes
Altitude	Yes
Date / Time	Yes
File name / Directory	Yes
Scale lines	Yes
Event Marks	Yes
Contacts / Targets	Option
Bottom Track	Yes
Bottom Re-tracking	Yes
Time Series Graphs	Yes
Read Q-Mips .DAT	Yes

BASIC CAPABILITY**Feature Isis® SS-Logger™**

Scroll forward	Yes
Scroll backward	Yes
Skip Pings forward	Yes
Skip Pings backward	Yes
Search File - Ping	Yes
Search File - Time	Yes
File looping	Yes
File Edit - "Snip File"	Yes
Alarm - low altitude	Yes
Alarm - low storage	Yes
TVG - Manual	Yes
TVG - Automatic	Yes
Selectable color	Yes
Printing	Option

ADVANCED CAPABILITY**Feature Isis® SS-Logger™**

Contact / Target	Option
Auto File Changing	Yes
ASCII Reporting™	Option
AUV Controls	Option
Digitizing	Option
Real Time Mosaicking	Option
Upgradeable	Yes
S/W EMA Plan	Yes

OUTPUT CAPABILITY

Feature Isis® SS-Logger™	
XTF data files	Yes
Save Raw ASCII	Yes
Output Telemetry	Yes

Compatible Sonar**Sidescan**

- Benthos SIS-1500 2 channel 200kHz 'Chirp'
- Benthos SIS-1502 4 channel 100kHz/500kHz 'Chirp'
- Benthos SIS-1503 4 channel 100kHz/500kHz 'Chirp'
- Benthos SIS-1000 100kHzSSS and 3.5kHz SBP
- Benthos SIS-3000 200kHzSSS and 3.5kHz SBP
- Benthos SIS-7000
- Benthos SIS-1624 4 channel 100kHz/400kHz
- Benthos C3D 2 channel 'Chirp'
- C-MAX CM2
- DTI SAS
- Edgetech 260
- Edgetech DF-1000 DCI
- Edgetech DF-1000 DCU
- Edgetech 272TD
- Edgetech 272ACI
- Edgetech 4300-MPX
- Edgetech 4200
- GeoAcoustics Analog
- Imagenex 858
- Klein 595
- Klein 2000
- Klein 2100
- Klein 3000
- Klein 5000
- Klein 5500
- Simrad 992 (Analog)