

Plate 2A

**Balanced cross-section of thin-skinned thrust-fault structures in the Rubjerg Knude Glaciotectonic Complex**

Plate 2A demonstrates the restored cross-section based on line balance and stratigraphic correlation.

Plate 2B demonstrates the retrodeformed thin-skinned thrust-fault geometry including the interpretation of ramps and flats in the subsurface, mainly based on data from the geological cross-section (Plate 1) and area balance.

UL	Ulstrup Section
SN	Stensnæs Section
MB	Martørv Bakker Section
KR	Kramrende Section
BR	Brede Rende Section
SR	Sandrende Section
SS	Stenstue Rende Section
GR	Grønne Rende Section
RF	Rubjerg Knude Fyr Section
ST	Stortorn Section
MR	Moserende Section
MK	Mårup Kirke Section
BL	Ribjerg Section below Blå-unconformity
RI	Area of Ribjerg Formation
MD	Area of Mid Danish T11 Formation
Ve	Area of Vendsyssel Formation
PTR	Post-thrust Rubjerg Knude Formation
NrLy	Foreland area extending to Nr. Lyngby to the south

Numbers refer to the order of sheets from foreland towards hinterland (distal-proximal)

d: duplex-segment in the proximal part of the complex  
 r: rest or dubious duplex-segment  
 s: small splint or horse  
 u: lower duplex-segment  
 o: upper part of thrust sheet above the L/R-unconformity

The thrust sheets are in general dominated by the Lønstrup Klint Formation. Exceptions are the thrust sheets located between the 40 m décollement level and the flat level at 30 m, which represent the Stortorn Formation. In the upper part of the thrust sheets, the o-annotated areas comprise the Rubjerg Knude Formation.

Plate 2  
 Geological Survey of Denmark and Greenland Bulletin 8

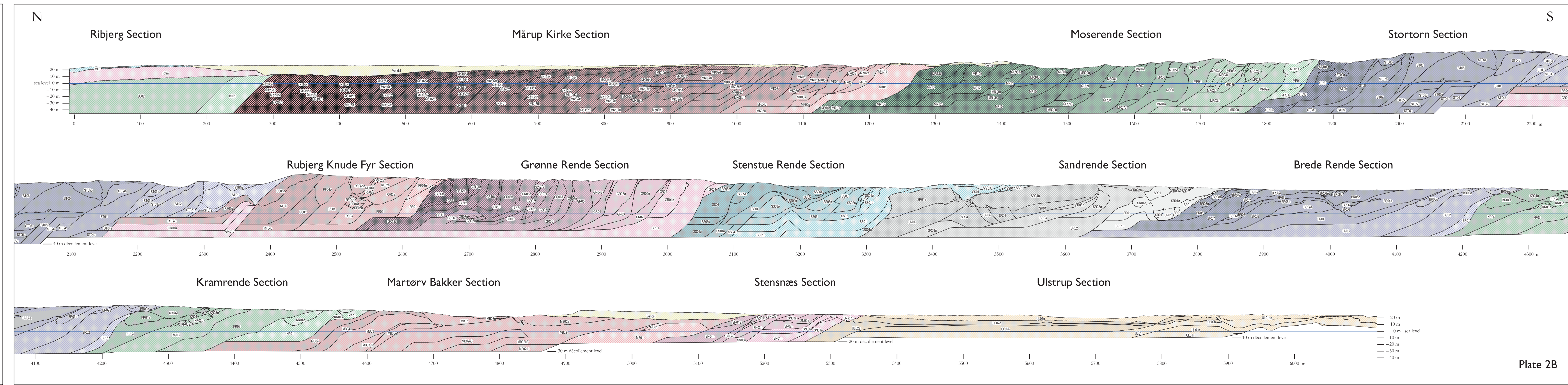


Plate 2B