

- Intel-based PC
- 80486 or Pentium processor
- Windows 3.1 or higher
- Minimum 16 Mb Ram
- A CD-Rom drive
- A SVGA-colour monitor (minimum 800x600)
- 256 colours or more

Virus scan the CD-ROM before use.

GEUS has no responsibility for any damage or losses this CD-ROM may cause.

# Geological map of Greenland

1 : 500 000



**Nyeboe Land**

(Sheet 7)

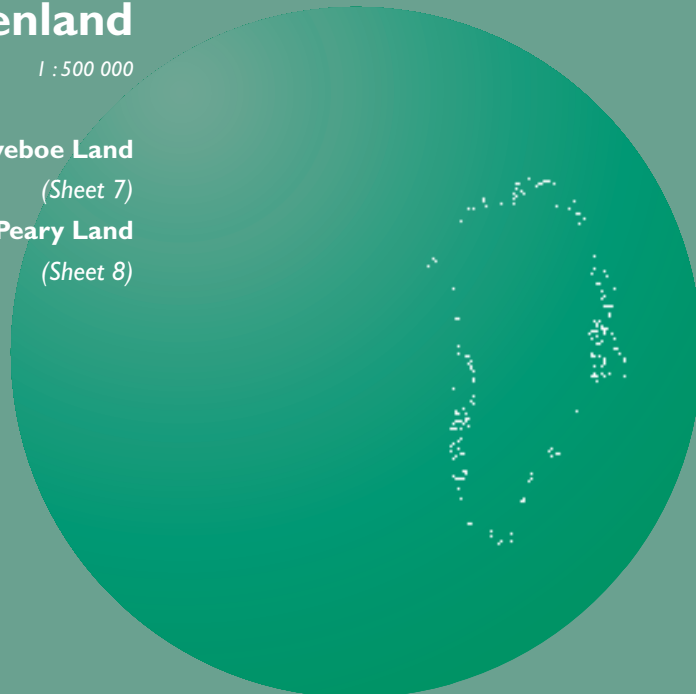
**Peary Land**

(Sheet 8)

GEOLOGY OF DENMARK AND GREENLAND MAP SERIES CD 1 • 1997

# Geological map of Greenland

1 : 500 000



**Nyeboe Land**

(Sheet 7)

**Peary Land**

(Sheet 8)

Danmarks og Grønlands  
Geologiske Undersøgelse (GEUS)  
*Geological Survey of Denmark and Greenland*

Thoravej 8  
DK-2400 Copenhagen NV  
Denmark

Phone +45 38 14 20 00  
Fax +45 38 14 20 50  
E-mail [geus@geus.dk](mailto:geus@geus.dk)

**GEOLOGICAL SURVEY OF DENMARK AND GREENLAND**  
**MINISTRY OF ENVIRONMENT AND ENERGY**



  
**GEUS**

## About this CD-ROM

The CD-ROM is based on 1:500 000 geological maps of Nyeboe Land (Sheet 7, printed 1989) and Peary Land (Sheet 8, printed 1984) compiled by N. Henriksen and H. J. Bengaard. Descriptive text to both sheets by Niels Henriksen was published in 1992.

Sheet 7. UTM zone 22 }  
Sheet 8. UTM zone 26 } International ellipsoid, geodetic datum NAD83

North Greenland is covered by two 1:500 000 geological maps. The region has large areas of Proterozoic basalts and quartzites and Cambro-Silurian carbonate and clastic sediments, and locally Late Palaeozoic to Mesozoic sediments.

This CD-ROM gives easy access to the 1:500 000 geological maps of Greenland and accompanying descriptive texts. The map, in whole or part, can be printed or copied in georeferenced TIFF format.

The CD-ROM is produced in collaboration with Cartography De Schutter, a unit of the Pre-Press Group De Schutter. Cartography De Schutter specialises in the management of geographic data and the production and creation of cartographic products.

1:500 000 geological map sheets of other parts of Greenland are also available on CD-ROM.

To help us improve future electronic publications, comments on function and data characteristics of this CD-ROM can be sent to [geus@geus.dk](mailto:geus@geus.dk).

## Getting started with the CD-Rom

***This 'Geological map of Greenland' on CD-ROM is one of a series of 8 covering Greenland at 1:500 000.***

### System requirements:

- Intel-based PC
- 80486 or Pentium processor
- Windows 3.1 or higher
- Minimum 16 Mb Ram
- A CD-ROM drive
- A SVGA-colour monitor (minimum 800 x 600 recommended)
- 256 colours or more

### Before you begin

Install the Acrobat Reader by running Acroread.exe in the Acroread directory on the CD-ROM.

### To load the application:

- 1 Insert a 'Geological map of Greenland' CD in the CD-ROM drive
- 2 Double-click the program icon:

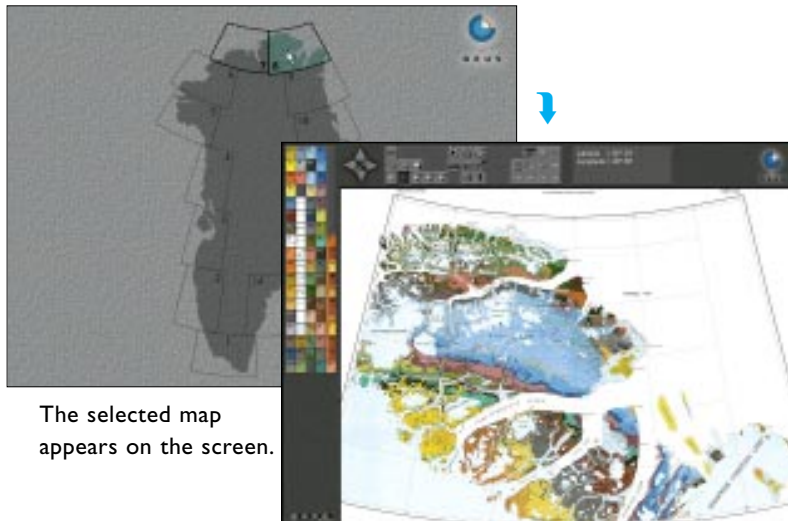


sheet7\_8.exe

## Selecting a map

## Navigation

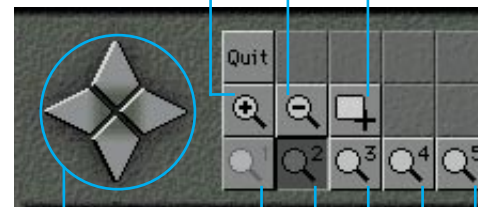
After loading the application, you will see an index map of Greenland. Click on the map you want to explore. The maps on this CD have a heavy outline.



Zoom to a specific point with the zoom-in button

Zoom out with the zoom-out button

Zoom window



Pan the zoomed map with the pan functions

Zoom directly to the desired zoom level with one of the five zoom level buttons



## Working with the legend

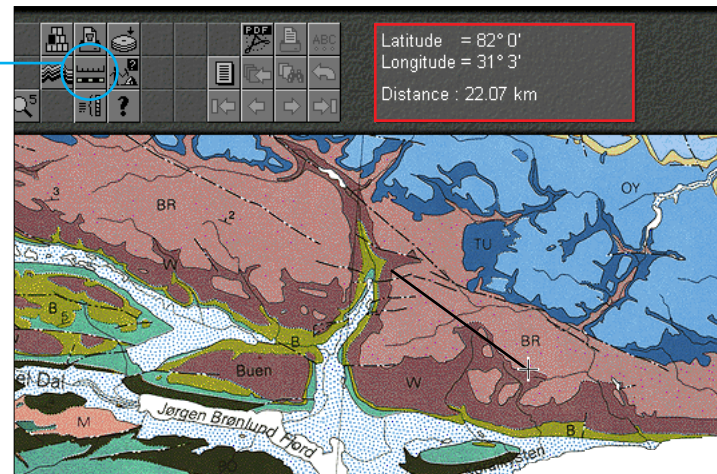
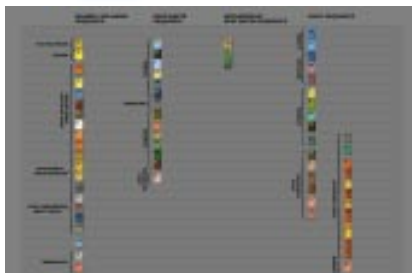
## The ruler

KK	WS	PL	SH
Ts	gr	NK	OY
me	vo	L	TU
Th	WL	BR	
PU	ME	W	
po	SV	T	
ba	AG	B	
δ	VG	BU	IF
C	Pm	PO	FS
HS	Ps	DC	Nrf
NA	Pp	KH	Nk
JC	PA	F	Na
LA	S	KC	Nh
UP	R	J	No
DU	Pm	M	I
PB	NA	Pp	CF
MI	PP	Pg	Z
MM	LP	D	gn

The tabular legend is always located in the upper left side of the screen. Clicking on a cell activates the description of that cell. It disappears automatically after a few seconds.

WANDEL SEA BASIN SEQUENCE  
Mallefik Mountain Group  
UPPER CARBONIFEROUS - LOWER PERMIAN

You can also view the map legend using the legend button:

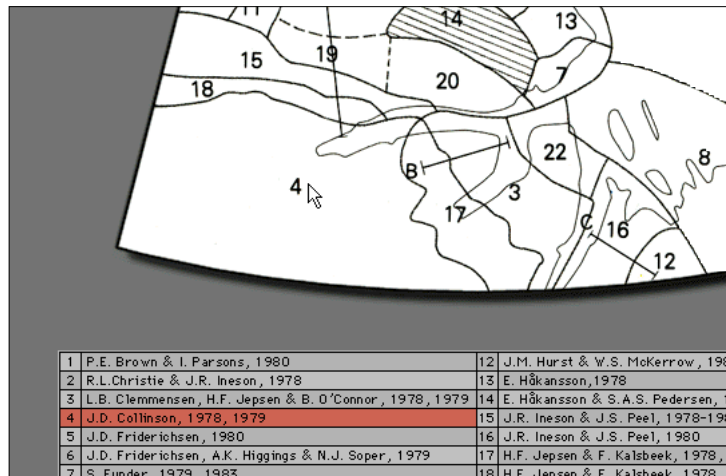


The ruler allows the measurement of **distances** in kilometres:

Click and drag the cursor over the map.



## Geological sources



This button shows the names of the mapping geologists and the areas in which they worked.

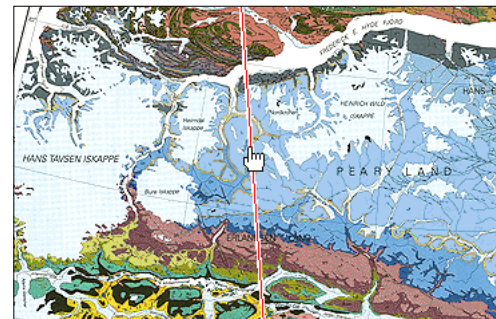


## Profiles

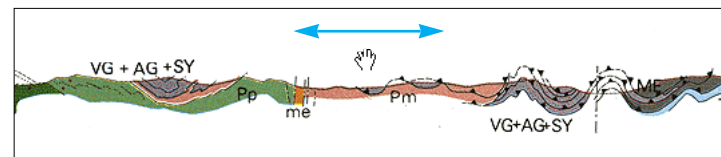
Some maps include profiles. Click on this button to view the available profiles:



Select a profile;



Drag to scroll the profile.



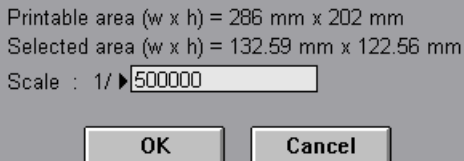
## Printing the map

If you want to print the map,  
click this button:



Choose entire map if you want to print the complete map, or choose window if you only want to print a portion of the map.

Type the scale you  
want the map to be  
printed at and click  
OK to print.



## Using the descriptive text

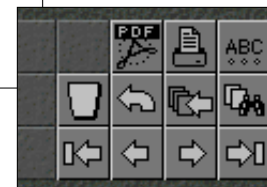
The descriptive text can be viewed by clicking the text button:



The descriptive text  
appears on the  
screen.

Text in colour is linked  
to **illustrations**, **tables** or  
**bibliographic references**.

Use these buttons to navigate and search in  
the descriptive text, or to print pages. ➔



*In addition to the descriptive text in the application itself, each CD-ROM includes an Adobe PDF file (Portable Document Format) for printing. You can view the PDF file by clicking on this button*



## Icon overview



Zoom level one



Zoom level two



Zoom level three



Zoom level four



Zoom level five



Zoom in



Zoom out



Zoom window



Index map



Print map



Export map



Profile



Ruler



Geological sources



Map legend



Quit Exit program



Text in Adobe PDF



Print text



Acces index



Descriptive text



Log viewed pages



Find word



Step back over viewed pages



Go to start of text



Previous page



Next page



Go to end of text



Return to map



Exit graphics or text



## Conditions of purchase

## Order form

### Copyright

Copyright of all data is retained by Danmarks og Grønlands Geologiske Undersøgelse (GEUS).

By purchasing a copy of the digital data, the purchaser obtains the right to use data for internal purposes only. Copies of the data or any part of them may not be given, lent, leased, resold or in any way distributed to any third party, including any party in any exploration or production partnership with the purchaser.

The purchaser may produce additional copies of the data, but only for the purchaser's own use.

The purchaser may not transfer the rights to use the data to any third party.

All products based on the data are covered by the same conditions as the original data unless explicit written permission has been given by GEUS.

### Liability

The digital data are produced by GEUS to internationally accepted scientific standards. However, GEUS shall not be held responsible for consequences arising from the purchaser's use of the data, whether such consequences are caused by defects inherent in the original data or by the purchaser's handling of the data.

## Fill in this form for ordering CD's

**Name**

**Company**

**Address**

**Quantity**

**Map**

**Method of payment**

### *and send or fax your order to:*

Geological Survey of Denmark and Greenland  
Thoravej 8, DK-2400 Copenhagen NV, Denmark  
Fax: +45 38 14 20 50